



STATE OF DELAWARE  
STATE COUNCIL FOR PERSONS WITH DISABILITIES  
MARGARET M. O'NEILL BUILDING  
410 FEDERAL STREET, SUITE 1  
DOVER, DE 19901

VOICE: (302) 739-3620  
TTY/TDD: (302) 739-3699  
FAX: (302) 739-6704

**MEMORANDUM**

DATE: November 18, 2011

TO: Ms. Sharon L. Summers, DMMA  
Planning & Policy Development Unit

FROM: Wendy Strauss, <sup>ws/kyf</sup> Vice-Chairperson  
State Council for Persons with Disabilities

RE: 15 DE Reg. 620 [DMMA Proposed Medicaid Alien Emergency, Labor & Delivery Regulation]

The State Council for Persons with Disabilities (SCPD) has reviewed the Department of Health and Social Services/Division of Medicaid and Medical Assistance's (DMMA) proposal to amend its regulation regarding *Coverage of Emergency Services and Labor and Delivery* published as 15 DE Reg. 620 in the November 1, 2011 issue of the Register of Regulations. In June 2011, DMMA adopted a regulation limiting Medicaid services eligibility of qualifying legally residing noncitizens to "emergency services and labor and delivery only." [14 DE Reg. 998 (April 1, 2011) (proposed); 14 DE Reg. 1361 (June 1, 2011)] The Division now proposes to adopt a regulation clarifying that labor and delivery services may be rendered not only in a hospital, but in a birthing center as well. SCPD endorses this clarification, but has the following observations on the proposed regulation.

The current regulation categorically limits emergency services to those "rendered in an acute care emergency room or in an acute care inpatient hospital". [Section 14370] Since DMMA is not limiting labor and delivery to hospital sites, it should consider whether covered emergency services can only be provided in a hospital. The DMAP definition of "emergency" includes a "severe acute illness or accidental injury that demands immediate medical attention or surgical attention" which, "without the treatment a person's life could be threatened or he or she could suffer serious long lasting disability." At 621.

There are free-standing emergency or urgent care centers which treat conditions covered by this standard. See attachments. For example, the Newark Emergency Center treats pneumonia, asthma, and fractures. If a patient presented with acute shortness of breath due to asthma and was treated with a nebulizer and concomitant treatment, that should be covered as a life-

threatening emergency. Similarly, the fracture of three fingers could be treated in the Center which would meet the standard of an accidental injury” which could result in “serious long-lasting disability.” Consistent with the attachment, the Silverside Medical Aid Network similarly covers broken bones, asthma, and pneumonia. It would be preferable for DMMA to expand the sites in which compensable emergency services can be provided. If free-standing center costs are less than hospital costs, such a change could also result in cost saving to the State.

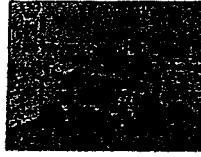
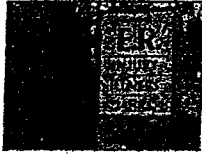
Thank you for your consideration and please contact SCPD if you have any questions or comments regarding our observations on the proposed regulation.

cc: Ms. Rosanne Mahaney  
Mr. Brian Hartman, Esq.  
Newark Emergency Center  
Silverside Medical Aid Network  
Governor’s Advisory Council for Exceptional Citizens  
Developmental Disabilities Council

15reg620 dmma-emergency 11-11

# Newark Emergency Center Illness & Injury

324 E. Main Street - Newark, Delaware 19711 - (302) 738-4300



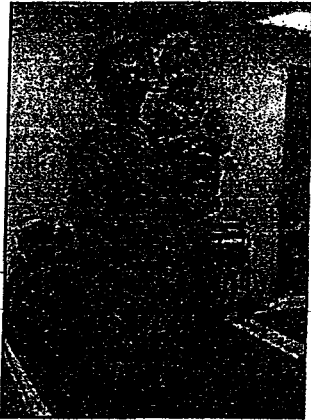
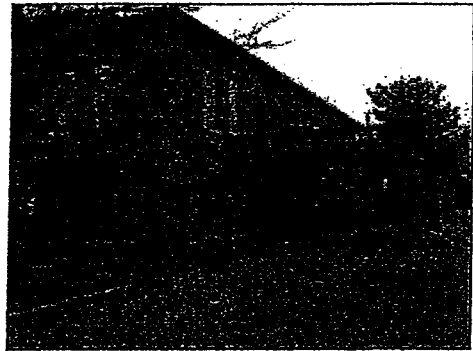
[Home](#) | [About Us](#) | [Services](#) | [NEC News](#) | [Location](#) | [Insurance](#) | [FAQ](#) | [Contact Us](#)

## 24 Hour Emergency Medical Care - Newark, Delaware

Newark Emergency Center (NEC) is open 24/7 - 365 days a year

We offer immediate medical care for all your urgent injuries and illnesses. NEC is staffed by highly trained physicians, registered nurses, x-Ray technicians and other ancillary personnel who have been serving the Greater Newark area and surrounding communities since 1973.

NEC offers a convenient, walk-in care service for a variety of injuries and illnesses, and we are ALWAYS OPEN to care for your medical emergencies. No appointment is ever necessary. We are located at the beginning of Main St. in Newark where there is easy access and ample parking.



We have our own X-ray facility as well as splinting materials for fractures and surgical trays for lacerations and are able to offer treatment for a variety of non-life threatening emergencies. Lab services are also available.

Unlike emergency rooms in hospitals where the waiting time may be hours, you can be in and out in a remarkably short time at our Center.

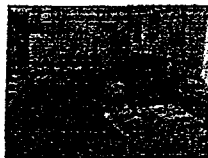
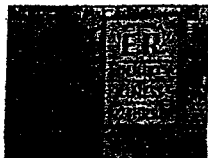
Available for follow-up care on surgical cases, the Minor Surgery Center, located on the second floor of the building is open five days a week from 8:00 am to 5:00 pm. It is staffed by experienced Board Certified Surgeons and can be contacted at 302 737-4990.

NEC is associated with PAPANASTAVROS IMAGING. We offer outpatient general x-Ray procedures with an order from your doctor from 8:00 am to midnight.

Copyright © 2007-2011 Newark Emergency Center - medical care in Delaware Site by [Attraction Website Design](#)

# Newark Emergency Center Illness & Injury

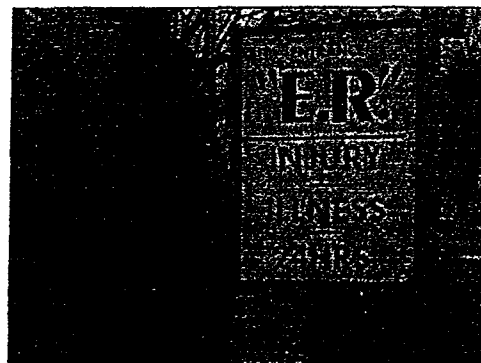
324 E. Main Street - Newark, Delaware 19711 - (302) 738-4300



[Home](#) | [About Us](#) | [Services](#) | [NEC News](#) | [Location](#) | [Insurance](#) | [FAQ](#) | [Contact Us](#)

## Medical Services

- Allergic reactions
- Asthma and breathing treatments (mild to moderate)
- Abdominal discomfort/pain
- Back pain
- Blood Pressure check
- Bronchitis
- Bruises/Scrapes
- Burns
- Chest pain
- Cold and Flu
- Cuts/ Lacerations (may require stitches)
- Cough
- Diarrhea
- Dressing change
- Ear aches
- EKG's
- Fever
- Fractures (minor)
- Headaches
- Heartburn
- Heat exhaustion
- Insect bites
- Joint pain
- Minor Musculoskeletal trauma
- Nausea /Vomiting
- Orthopedic problems
- Pharyngitis
- Pneumonia
- Rashes/Itch
- Sore throat
- Sport injuries
- Sprains/strains
- Sexually transmitted diseases
- Urinary tract infections
- Upper respiratory infections
- Work related injuries (Worker's Comp)



After being seen you will be referred to follow up with your own Primary Care Doctor or to one of our on-call specialists. NEC has a friendly relationship with local specializing Physicians from Orthopedic Surgeons to Gynecologists



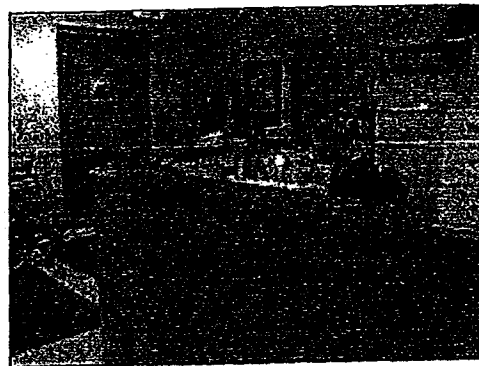
**NEC also offers:**

- NEC offers simple Back To School physicals
- Sport physicals

<http://www.newarkemergencycenter.org/services.php>

11/13/2011

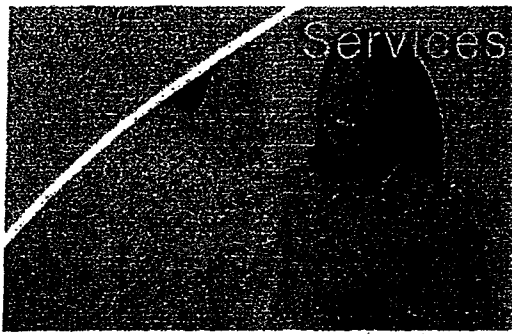
- Blood Pressure screening
- NEC has transfer agreements to all acute hospitals in the area



**If you are experiencing severe, possibly life-threatening symptoms, you should call 911 or go to your nearest hospital emergency room.**

Copyright © 2007-2011 Newark Emergency Center - medical care in Delaware Site by [Attraction Website Design](#)

Home About Us Locations Services How to Pay What to Bring Careers Contact Us



- Quick, quality care for newborns through geriatrics for a broad range of everyday injuries, illnesses and issues that are not life threatening.
- SilverSide Medical Aid Network has a board certified physician and a nurse on duty at all times at two convenient locations to treat you.
- Walk-in, no appointment or referral needed! Two locations so you don't have to wait. *Extended hours 8 am – 10 pm daily at our SilverSide location.*

SilverSide Medical  
(302) 477-1977

**WHEN TO GO DIRECTLY TO AN EMERGENCY ROOM**

- Life-threatening allergic reactions
- Severe abdominal pain
- Symptoms of heart attack or stroke
- Loss of consciousness
- Pregnancy bleeding / complications
- Amputation of a body part
- Severe burns
- Severe choking
- Electrical shock
- Falls from more than 6 feet
- Open or angulated fractures
- Infants with temperature over 103°

**WHEN TO SEE US**

**Illnesses**

- Coughs, colds, sinus congestion
- Sore throats, laryngitis
- Earaches, earwax removal
- Eye infections, styes
- Headaches – migraine & tension
- Flu-like symptoms & fever
- Pneumonia & Bronchitis
- Asthma
- Minor allergic reactions
- Insect bites & bee stings
- Urinary tract infections
- Rashes & poison ivy
- Skin infections
- Gout
- Nausea, vomiting, diarrhea
- Nosebleeds

**Physical Examinations**

- School
- Sports
- Camp
- Pre-employment

**Vaccinations**

- Flu shots
- Tetanus shots

**Screenings**

- TB Skin Test
- Pregnancy
- STDs

**Initial Visit Work-Related Injuries**

**Injuries**

- Broken bones
- Lacerations
- Sprains & strains
- Burns
- Sports injuries
- Eye injuries
- Splinter removal

**Instant Tests**

- Strep
- Blood sugar
- Urine analysis
- EKG

**Reclast Infusion Therapy (Needs Primary Care Physician Referral)**

**Automobile Accidents**

**Allergy Shots**

X-Ray & Lab work available in the building at both locations

